

# HEAVY INDUSTRIAL CONSTRUCTION WORKFORCE OUTLOOK TO 2022

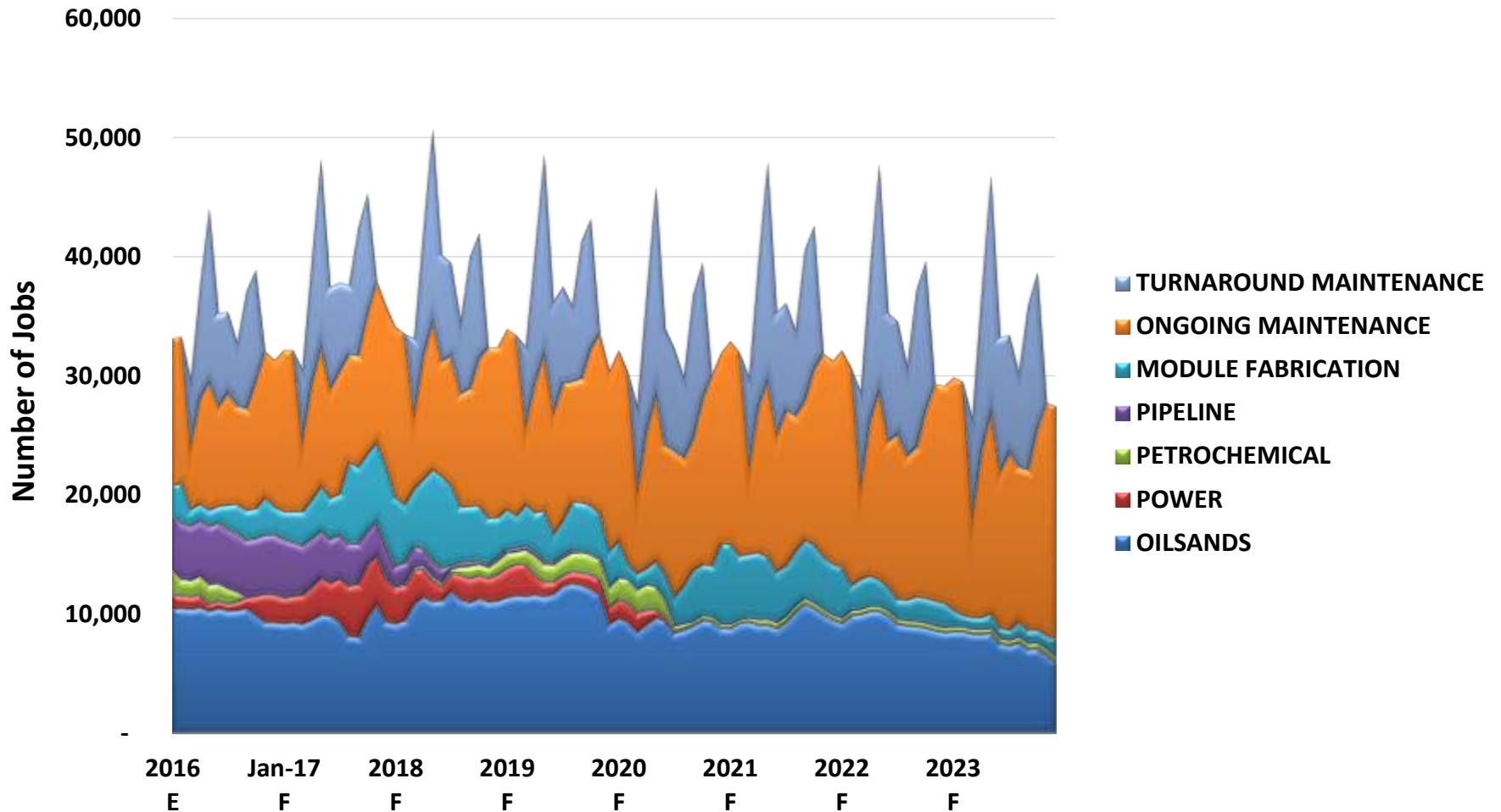
May 2016



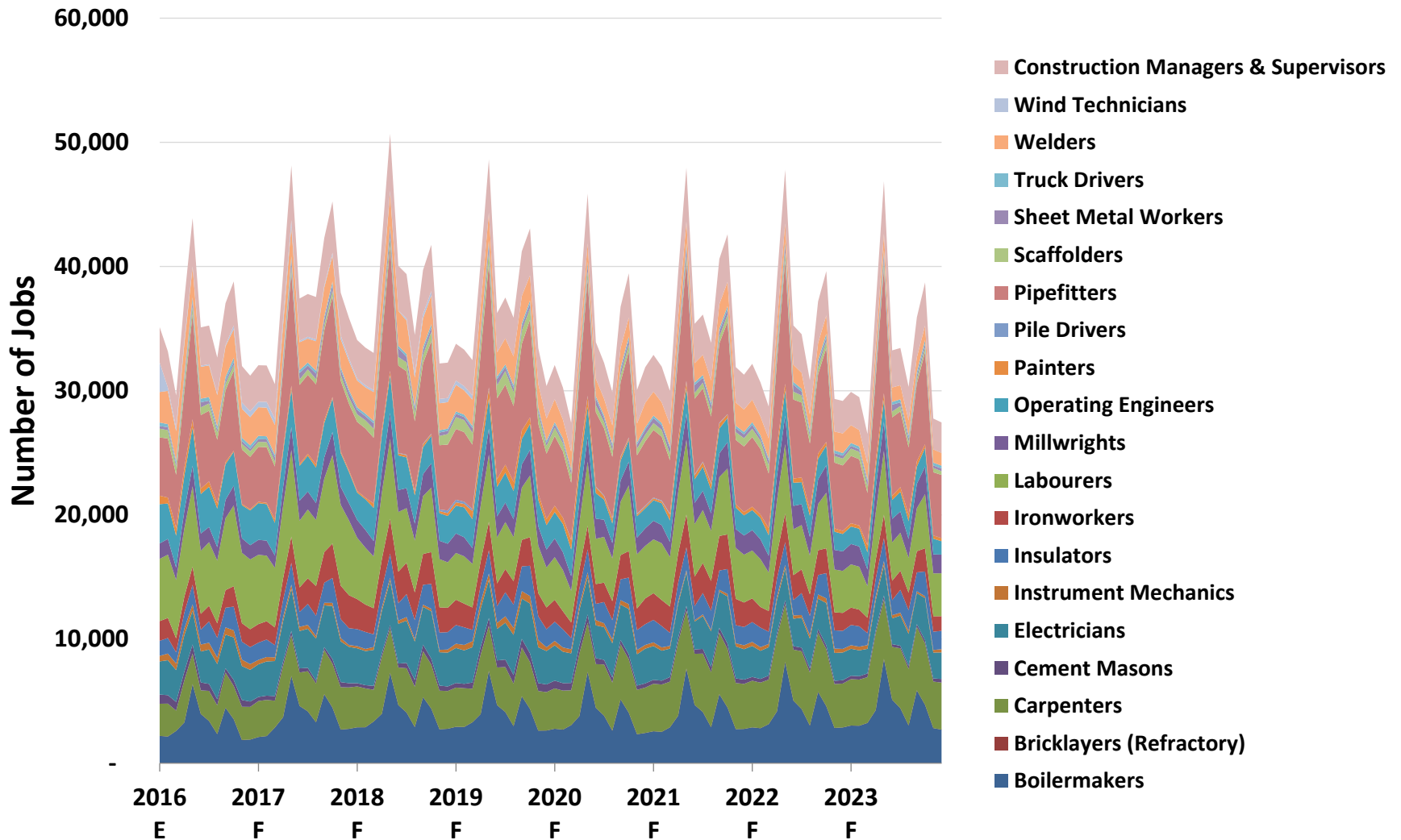
# UPDATES IN NOVEMBER 2016

- **The following reflects updates that have been made to the projections in May 2016**
  - **Refreshed pipeline workforce projection based on updated project information as validated by companies:**
    - **Oil Sands (Mining, In-situ, Upgrading)**
    - **Petrochemical**
    - **Pipeline (Pipelines, Pump-stations, Terminals)**
    - **Power Generation (Wind & Gas)**
  - **Refreshed modularization workforce projection;**
  - **Refreshed ongoing and turn-around maintenance workforce projection**
  - **Incorporated all projects that have been announced as of March 30, 2016**

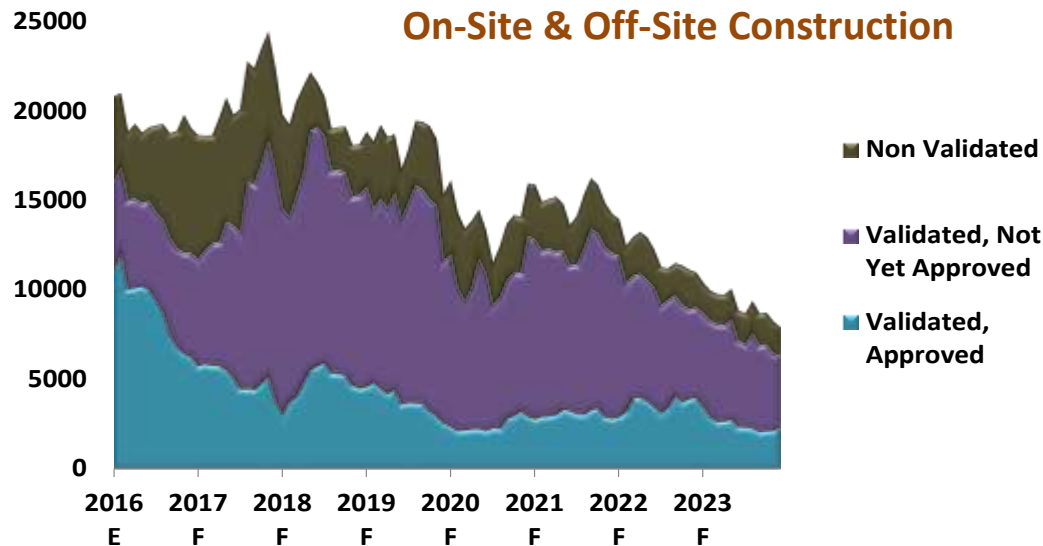
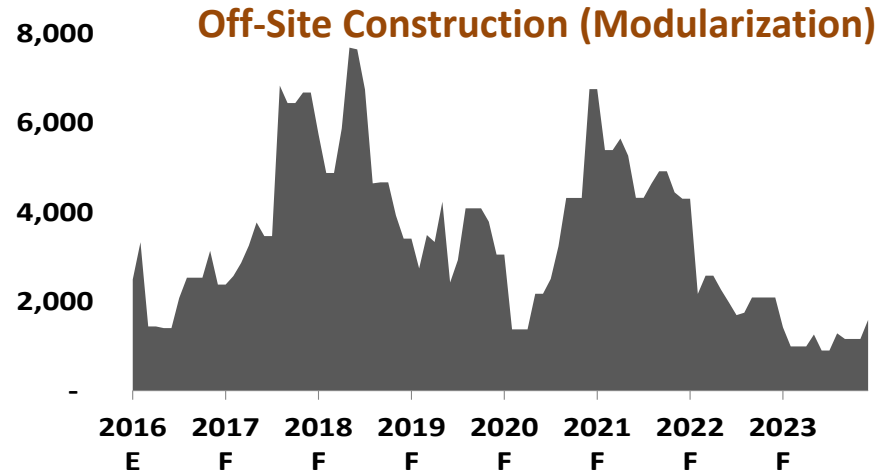
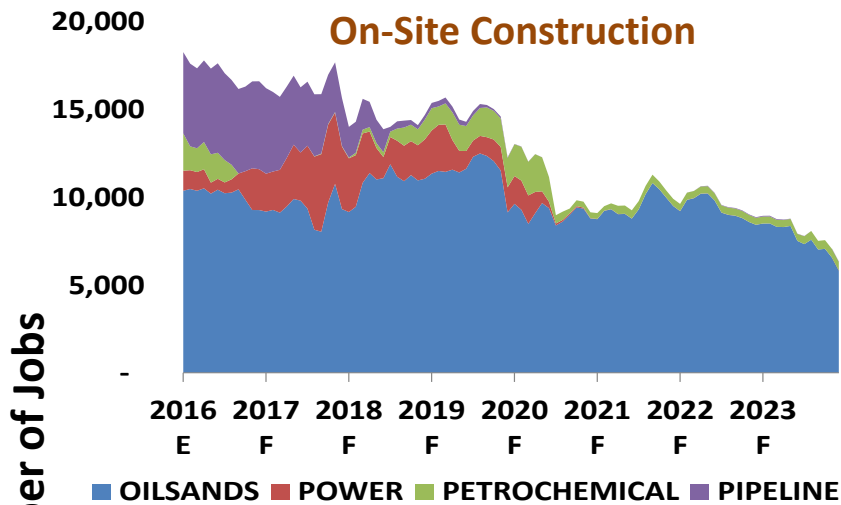
# HEAVY INDUSTRIAL CONSTRUCTION WORKFORCE REQUIREMENT TO 2023



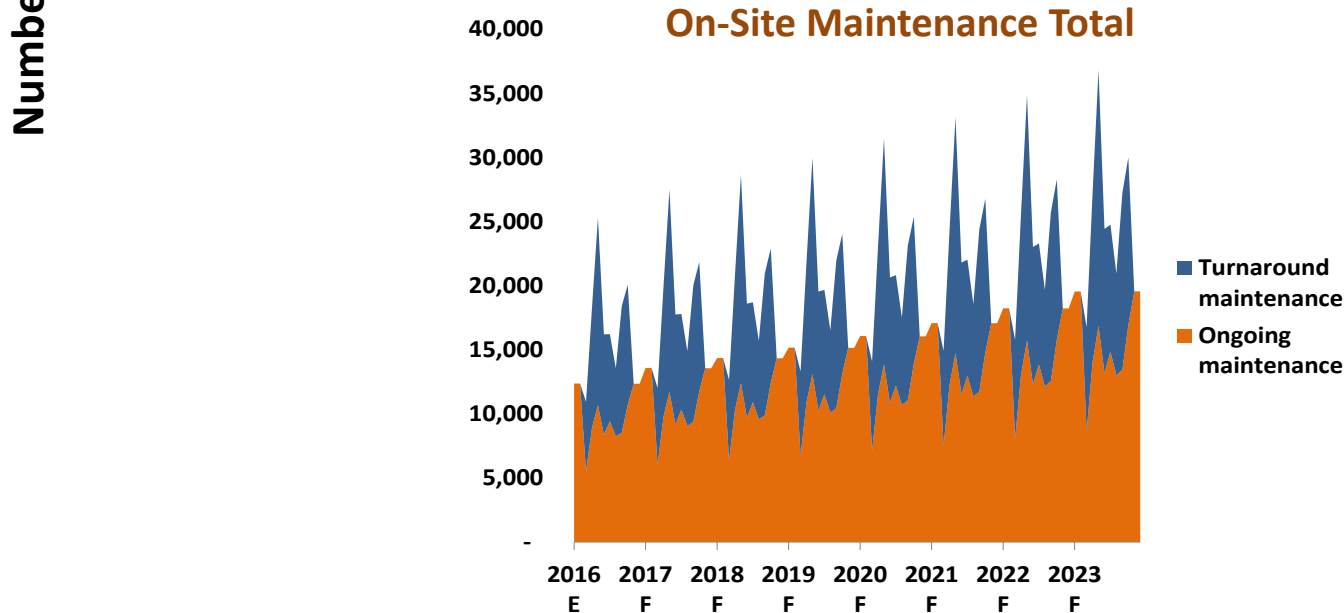
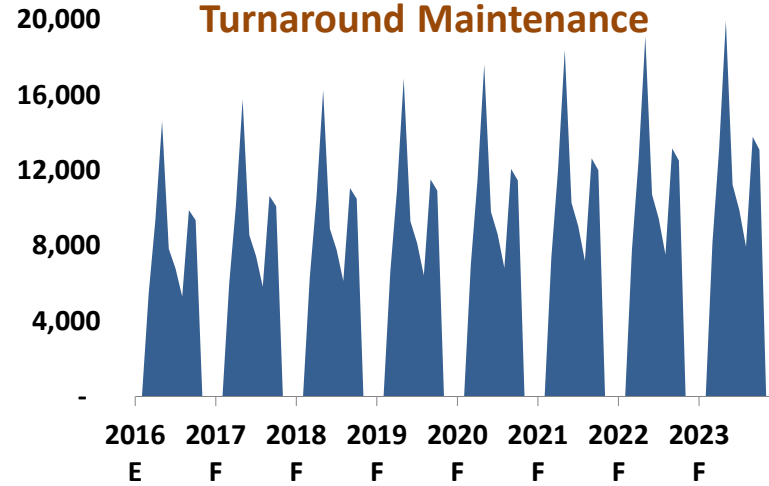
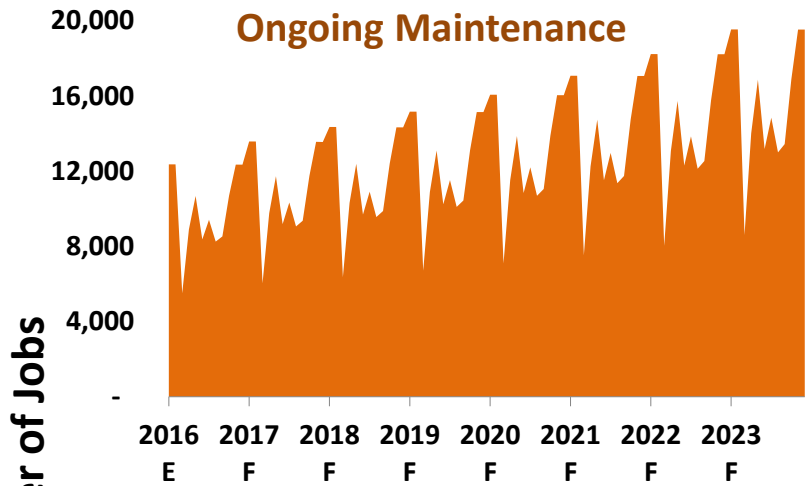
# HEAVY INDUSTRIAL CONSTRUCTION WORKFORCE REQUIREMENT TO 2023



# HEAVY INDUSTRIAL CONSTRUCTION WORKFORCE REQUIREMENT TO 2023

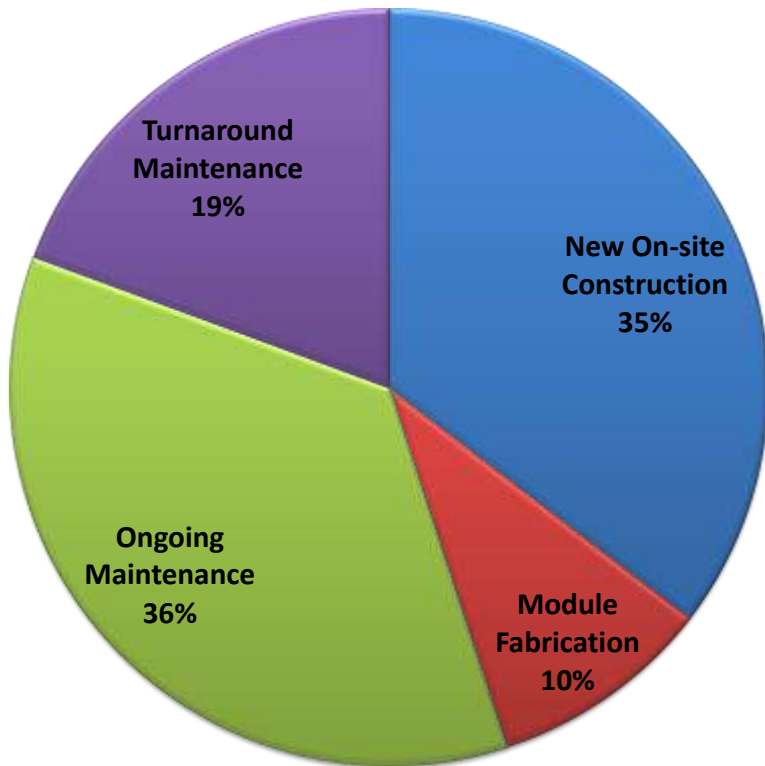


# HEAVY INDUSTRIAL CONSTRUCTION WORKFORCE REQUIREMENT TO 2023



# HEAVY INDUSTRIAL CONSTRUCTION WORKFORCE REQUIREMENT TO 2023

Distribution of Workforce Requirement by Type of Project



Distribution of Workforce Requirement by Occupation

