

# HEAVY INDUSTRIAL CONSTRUCTION WORKFORCE OUTLOOK TO 2022

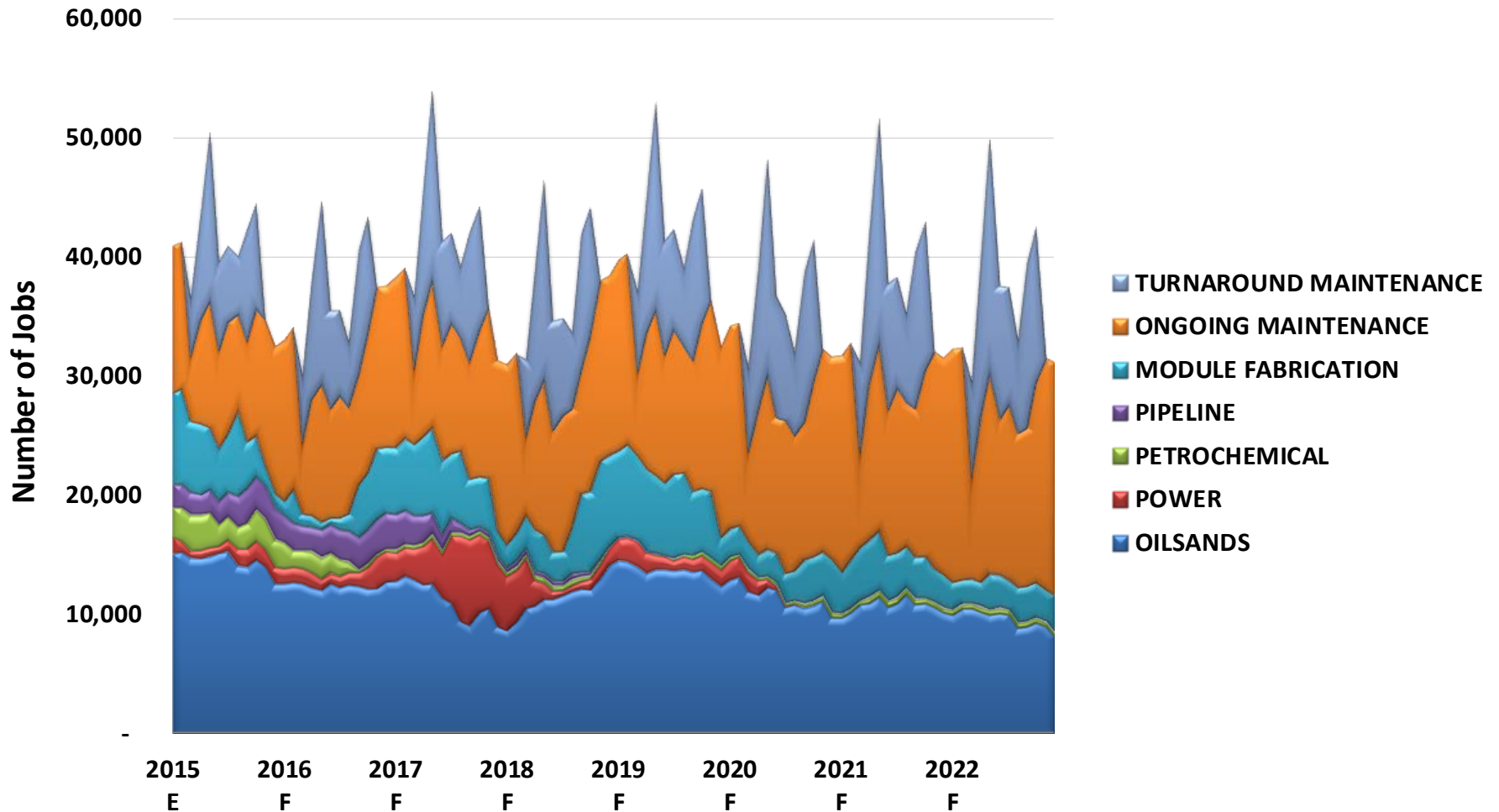
November 2015



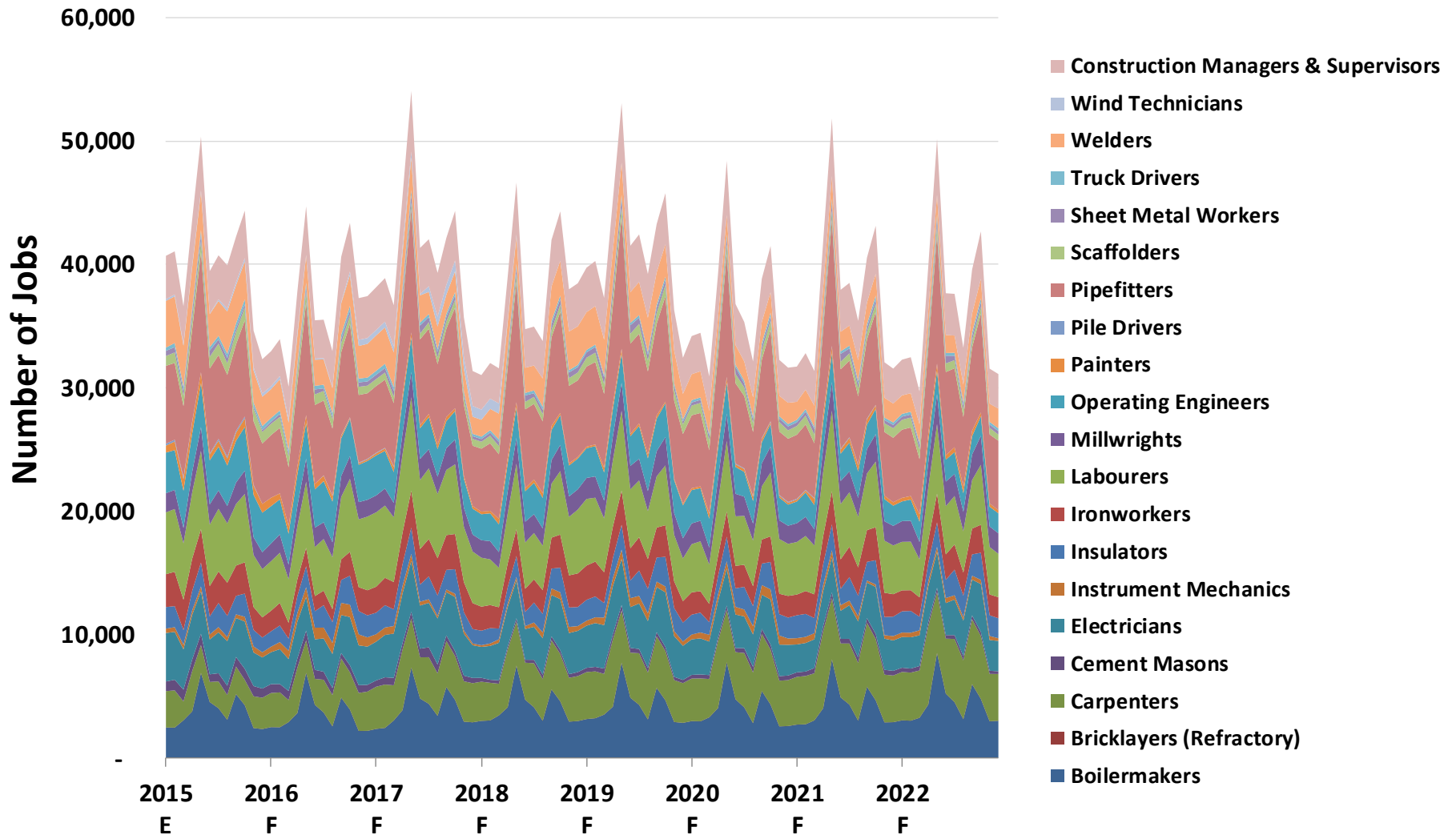
# UPDATES IN NOVEMBER 2015

- **The following reflects updates that have been made to the projections in November 2015**
  - **Refreshed pipeline workforce projection based on updated project information as validated by companies:**
    - **Oil Sands (Mining, In-situ, Upgrading);**
    - **Petrochemical;**
    - **Pipeline (Pipelines, Pump-stations, Terminals)**
    - **Power Generation (Wind & Gas)**
  - **Refreshed modularization workforce projection;**
  - **Refreshed ongoing and turn-around maintenance workforce projection**
  - **Incorporated all projects that have been announced as of October 30, 2015.**

# HEAVY INDUSTRIAL CONSTRUCTION WORKFORCE REQUIREMENT TO 2022

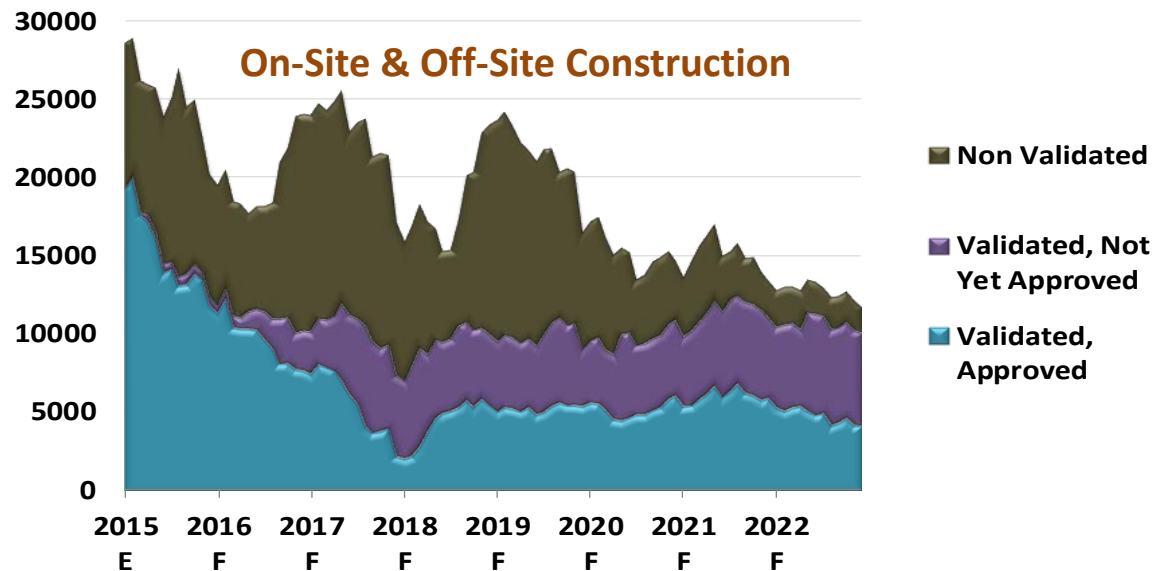
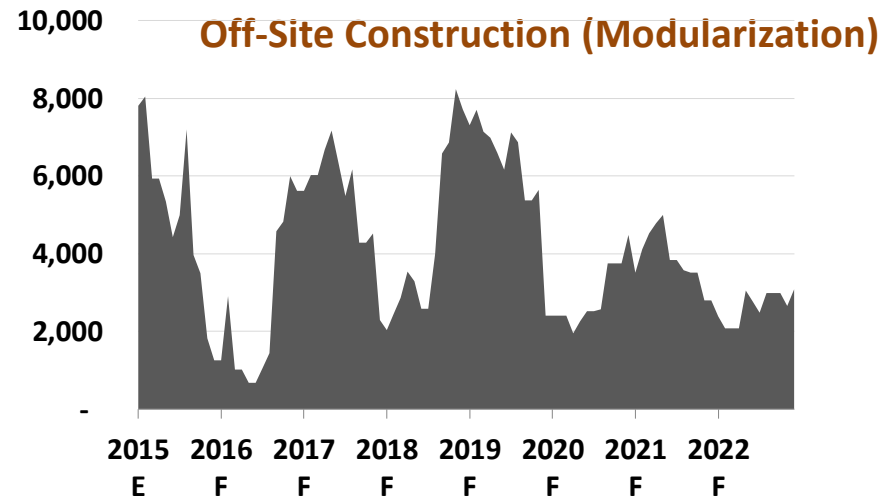
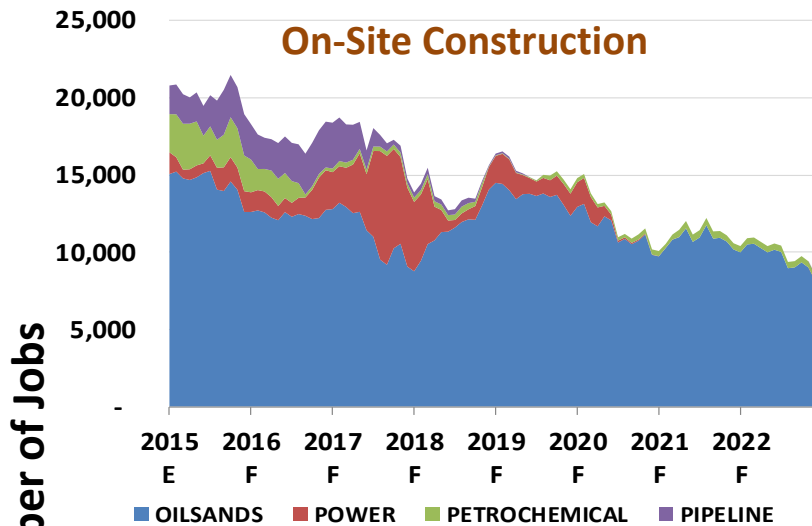


# HEAVY INDUSTRIAL CONSTRUCTION WORKFORCE REQUIREMENT TO 2022



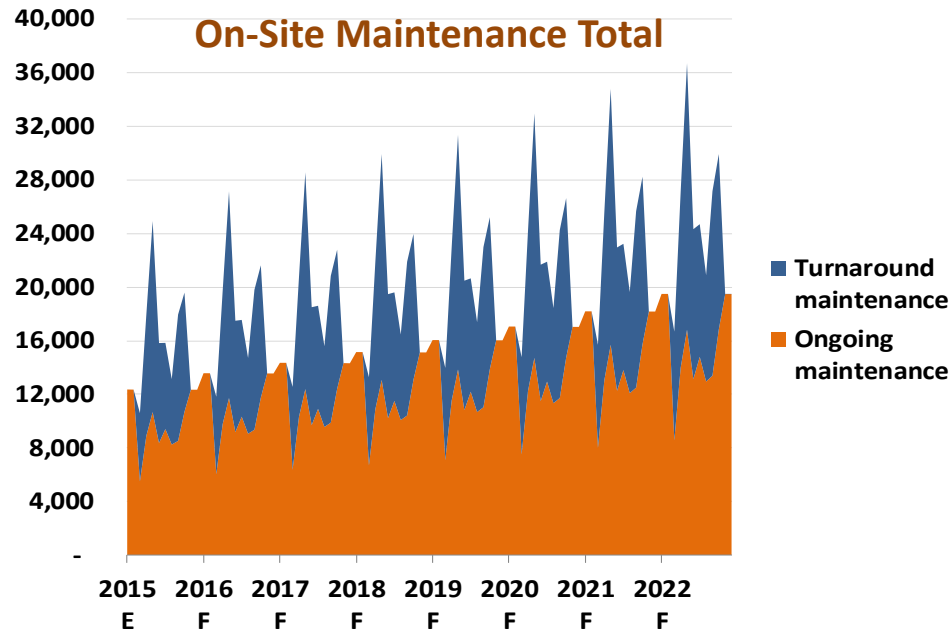
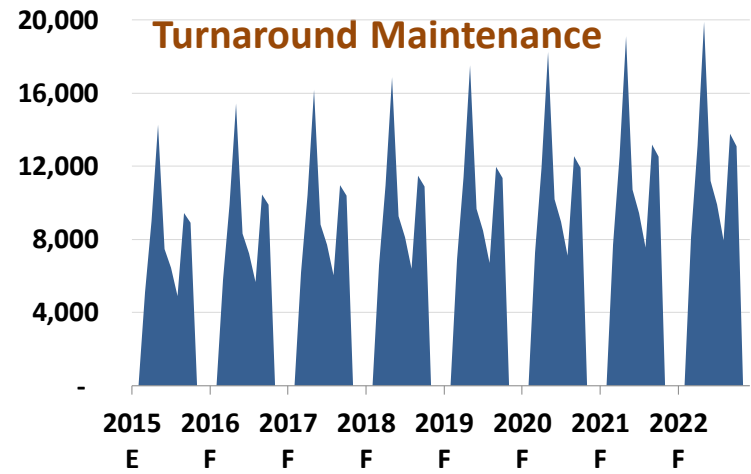
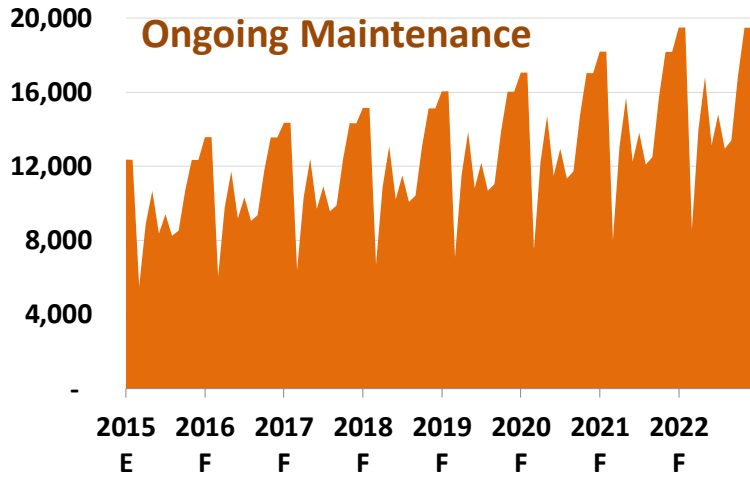
# HEAVY INDUSTRIAL CONSTRUCTION

## WORKFORCE REQUIREMENT TO 2022



# HEAVY INDUSTRIAL CONSTRUCTION WORKFORCE REQUIREMENT TO 2022

Number of Jobs

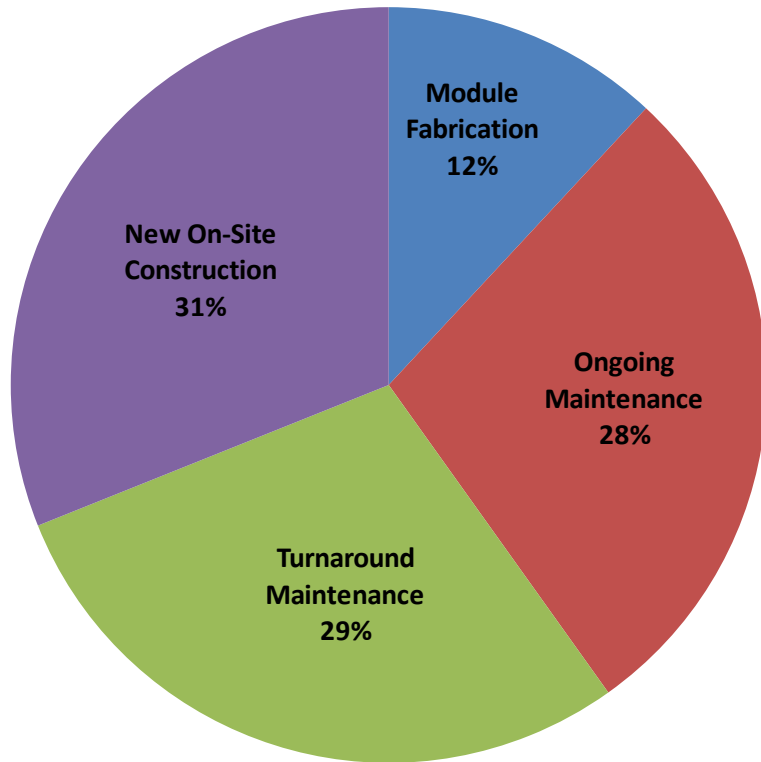


■ Turnaround maintenance  
■ Ongoing maintenance

# HEAVY INDUSTRIAL CONSTRUCTION

## WORKFORCE REQUIREMENT TO 2022

Distribution of Workforce Requirement by Type of Project



Distribution of Workforce Requirement by Occupation

