



WorkFace Planning “The Owners Role”



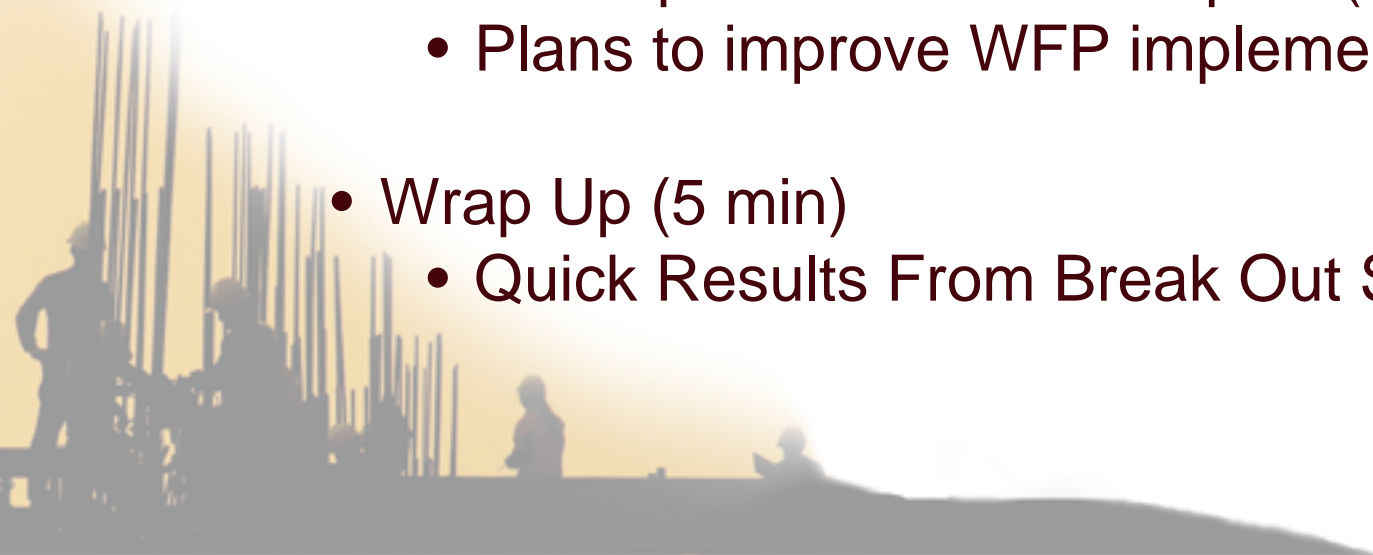
Workshop Objectives

- Rate how well the Owner has implemented WFP
- Discuss and provide input as to what Owners need to do, to better implement WFP
- Two Owner Companies will share their plans to improve WFP implementation.

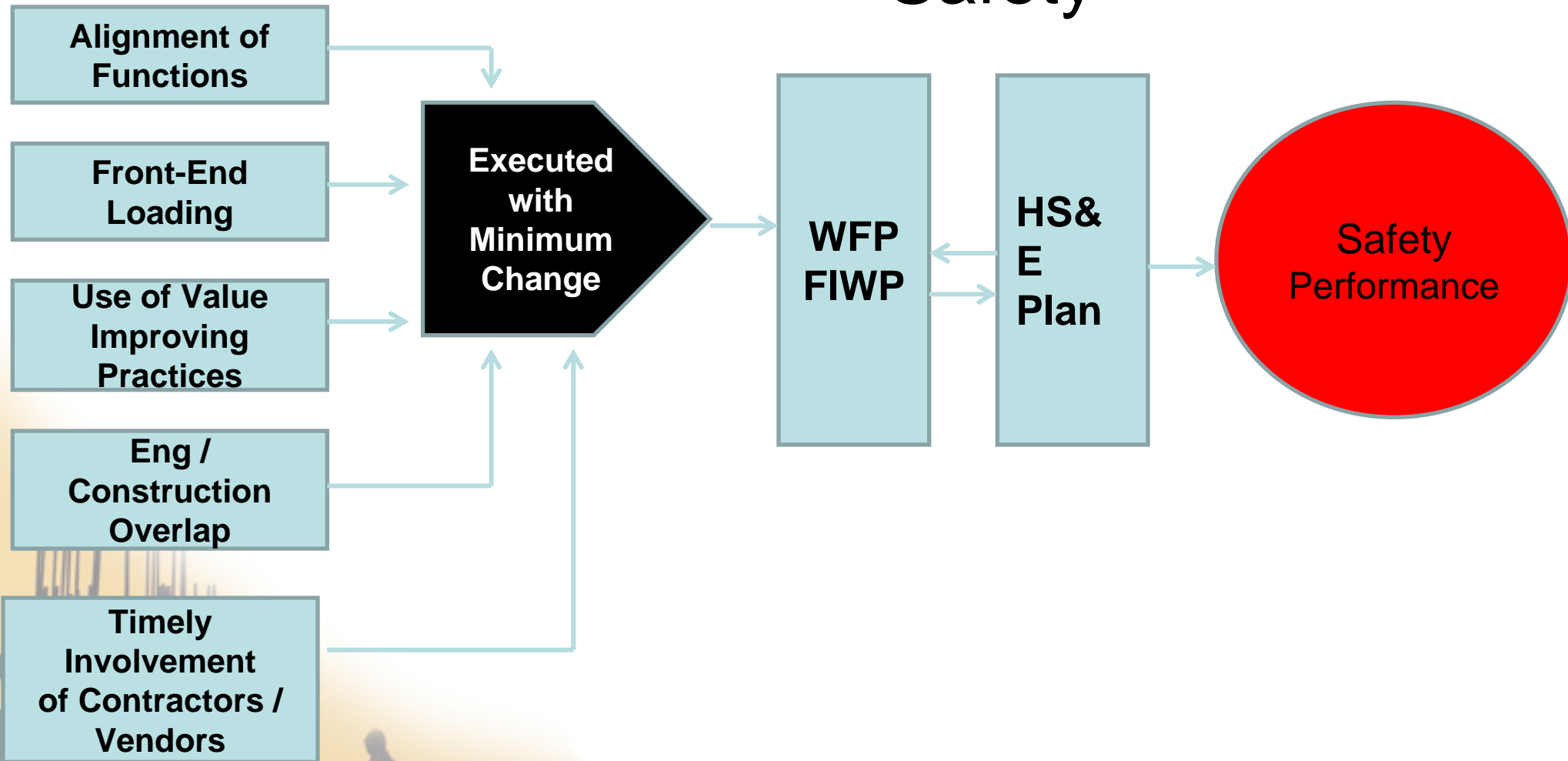


Workshop Agenda

- Introduction (10 min)
- Breakout Session (45 min)
 - Questionnaire
 - Break into Groups
 - Discuss how Owners can improve implementation of WFP
- Owner Implementation Examples (20 min)
 - Plans to improve WFP implementation
- Wrap Up (5 min)
 - Quick Results From Break Out Session

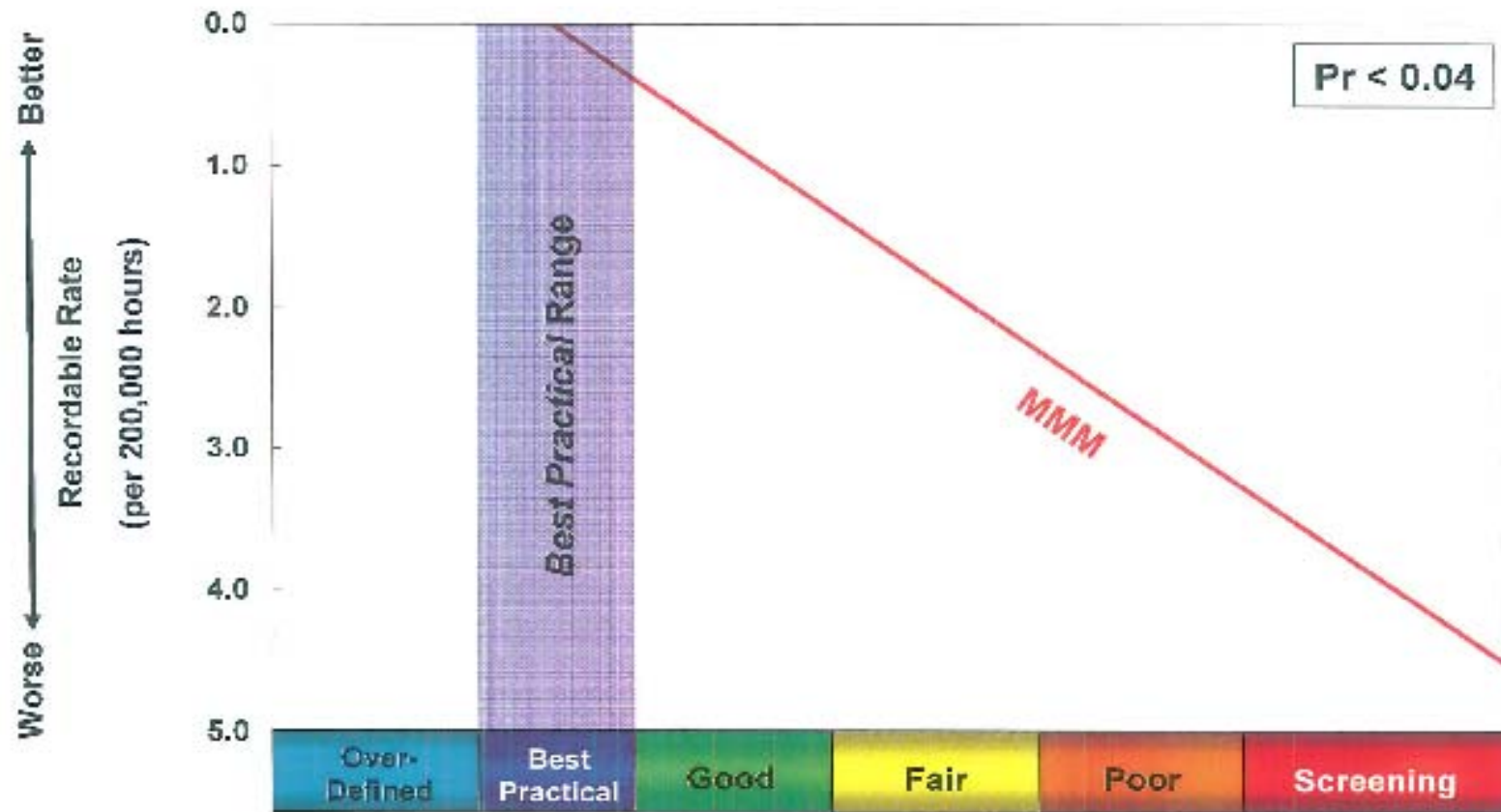


Safety Moment: Work Face Planning as a Driver to Project Safety



FEL Index vs. Recordable Rate

Poorer Level of Definition Results in Worse Safety Performance

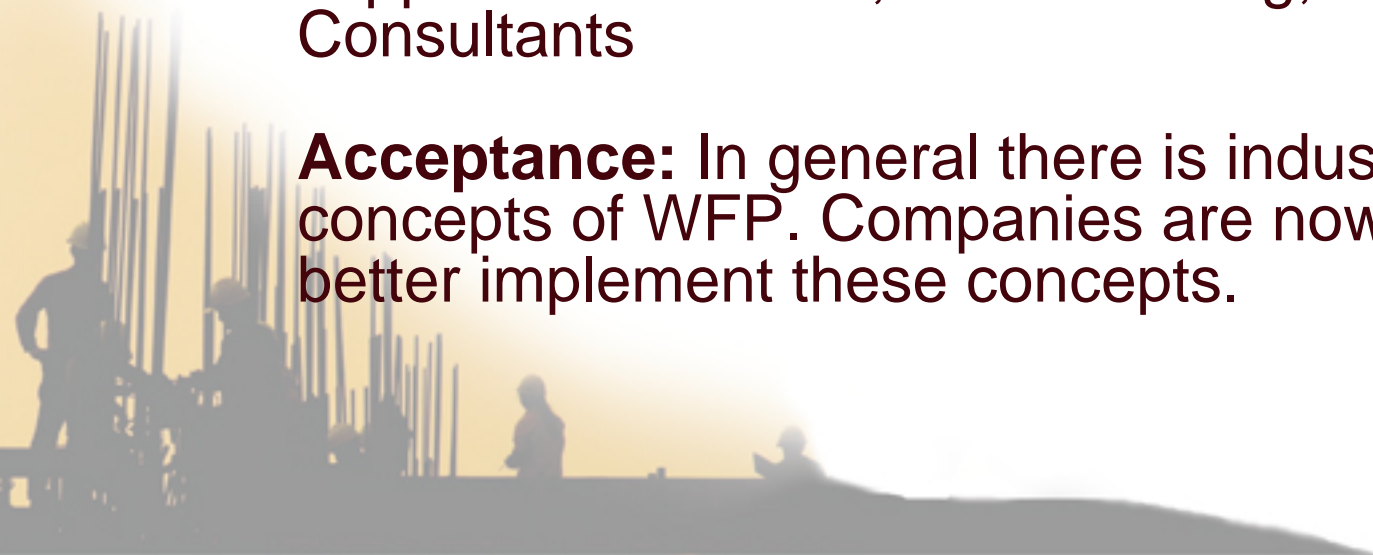


WorkFace Planning 2004 - 2009

- **Opportunity:** Improve labour productivity
- **The Model**
 - Flow Chart
 - Rules
 - Tools

Implementation: The model is generic. Gives industry a common approach and common language. 3rd party support has evolved; SAIT Training, Software tools, and Consultants

Acceptance: In general there is industry support for the concepts of WFP. Companies are now looking at how to better implement these concepts.





Owner's Role in Implementing WFP

- 1) Understand WFP
- 2) Figure out how their organization will implement WFP
 - Define Corporate Goal with respect to WFP
 - Determine changes to work processes
 - Project work flow process
 - Procurement process
 - Contracting documents
 - Determine if WFP results are tied to bonus/incentive compensation goals.
 - Determine training requirements and measurement plans.
 - Learn and improve.



Owner's Role in Implementing WFP

- 3) For a given project use the Company's programs to incorporate WFP.
 - Owners Objectives (identify sponsor and goal)
 - Project Execution Plans to identify, plan, and resource WFP tasks.
 - Engineering Plan
 - Constructability Plan
 - Construction Execution Plan
 - Procurement Plan
 - WFP will impact E – P - C Deliverables:
 - The design of WBS and CWP packaging
 - Timing of bringing in Construction talent into the FEED process.
 - Planners to define and assemble FIWP
 - Impact procurement deliverables to match FIWP requirements.

Break Out Session

- Time: 45 Minutes
- Questionnaire (10 Minutes)
 - Complete the questionnaire and take to the station market by the industry area you choose, wait there for instructions
- Round Table (35 minutes):
 - As a group discuss what you think Owners could be doing to improve the implementation WFP
 - Summarize your input on either the Flip Chart, or on a note pad. Hand your input to your facilitator.
 - If you would like detailed results from the session, fill in the attendance sheet with your email address.

Questionnaire

...wertung

Sehr gut

Gut

Befriedigend

Ausreichend

Mangelhaft

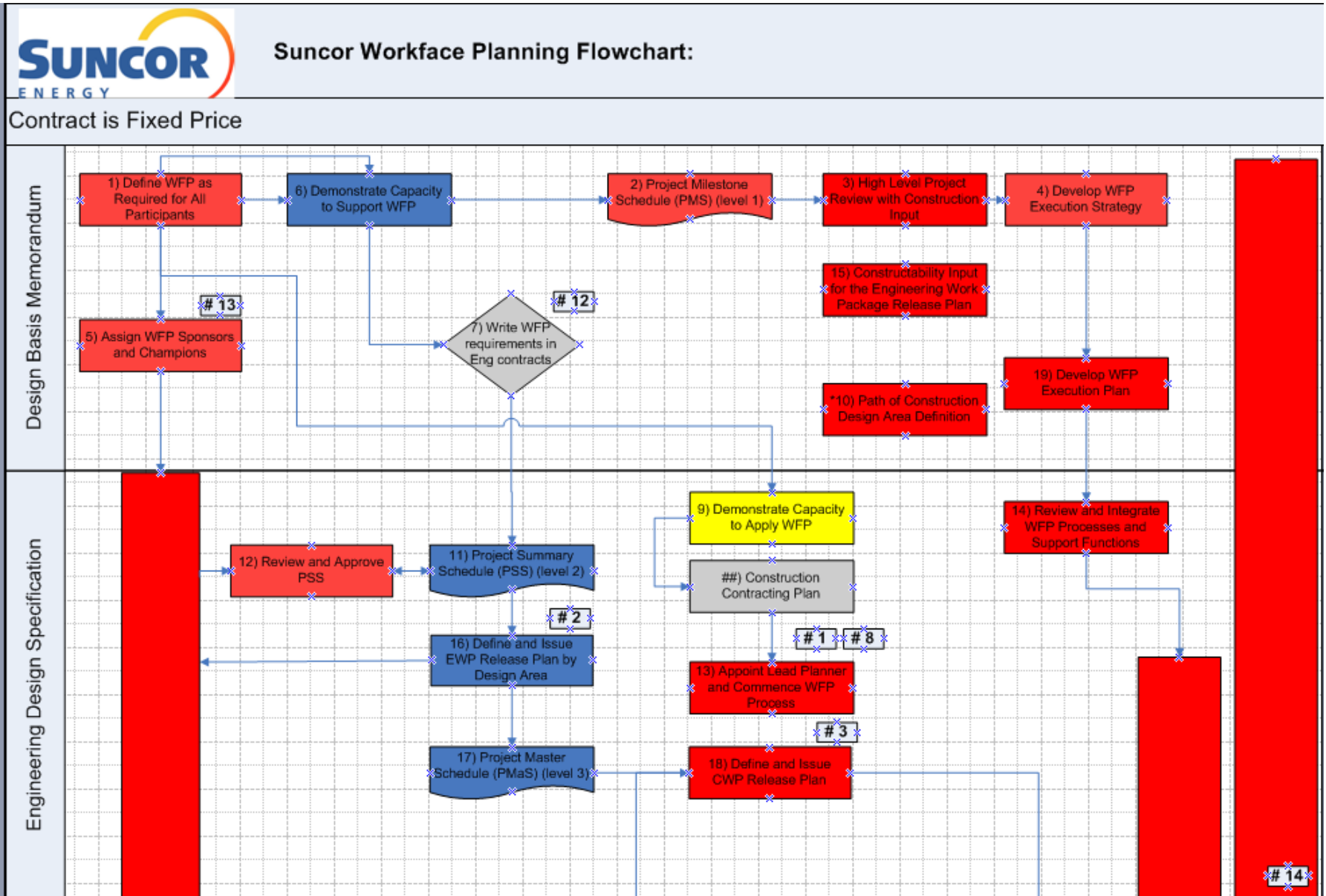


Suncor WFP Implementation

- Mapping Suncor's WorkFace Planning Model
- Developing an Implementation Manual
- Developing Standards and Procedures
- Modifying existing Standards and Procedures
- Construction Planning to support WFP success, Path of Construction, CWPs
- Educating Project Teams and Executive



Suncor WFP Implementation



Nexen Long Lake Projects

- Phase I SAGD/Upgrader – “Business as usual.”
- Debottlenecking – WorkFace Planning “Version 1”
- Small wins Right direction.



Nexen Long Lake Projects



Nexen Long Lake Projects

- Path forward for Nexen
- Cultural Change
- Develop training that ensures that everyone in the food chain gets appropriate training tailor made for their needs.
- Work the Plan!



Nexen Long Lake Projects

**“ My fellow American Participants, ask your country
WorkFace Planning what you can do for your
country.”**

- John F. Kennedy





Questionnaire Quick Results





Workshop Wrap Up

Additional Results from Round Table and Questionnaire will be e-mailed out to participants and posted to the WFP Website.





Thank you!

